

Product data sheet

Characteristics

SSLM1D101M7

SSR - DIN rail mount - input 90-280 V AC, output 4-28 V DC, 0.1A, positive logic

Product availability : Non-Stock - Not normally stocked in distribution facility

Price* : 28.90 USD



Main

Range of product	Harmony Relay
Product or component type	Solid state relay
Device short name	SSLM
Phase	1 phase

Complementary

Mounting support	Symmetrical DIN rail
Line Rated Current	0.1 A
Output voltage	4...28 V DC
[Uc] control circuit voltage	90...280 V AC
Contacts type and configuration	1 NO
CLAMPING FORCE	0.6...0.8 N.m
Connections - terminals	Screw terminals, 1 x 0.2...1 x 5.26 mm ² AWG 24...AWG 10)
Switching voltage	90 V AC turn-on
Load current	0.1 A
Maximum voltage drop	<0.5 V on-state
Response time	20 ms turn-on) 20 ms turn-off)
Overvoltage category	III
Maximum Width	0.30 in (7.5 mm)
Maximum Height	3.15 in (80 mm)
Maximum Depth	2.48 in (63 mm)
Net Weight	0.07 lb(US) (0.03 kg)

Environment

Dielectric strength	4000 V input/output
Pollution degree	2
Product certifications	UL EAC

* Price is "List Price" and may be subject to a trade discount – check with your local distributor or retailer for actual price.

Sep 30, 2020

	CSA
Marking	CE UL CSA EAC
Ambient air temperature for operation	32...158 °F (0...70 °C)

Ordering and shipping details

Category	21127 - ZELIO ICE CUBE RELAYS
Discount Schedule	CP2
GTIN	00785901804222
Nbr. of units in pkg.	12
Package weight(Lbs)	12 lb(US) (5.44 kg)
Returnability	No
Country of origin	MX

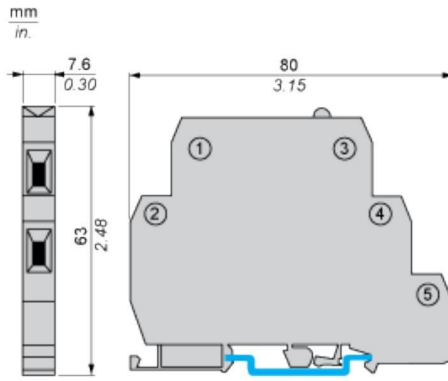
Packing Units

Unit Type of Package 1	PCE
Package 1 Height	2.95 in (7.5 cm)
Package 1 width	4.33 in (11 cm)
Package 1 Length	4.37 in (11.1 cm)
Unit Type of Package 2	BB1
Number of Units in Package 2	12
Package 2 Weight	15.66 oz (444 g)
Package 2 Height	2.95 in (7.5 cm)
Package 2 width	4.33 in (11 cm)
Package 2 Length	4.37 in (11.1 cm)
Unit Type of Package 3	S01
Number of Units in Package 3	48
Package 3 Weight	4.41 lb(US) (2.001 kg)
Package 3 Height	5.91 in (15 cm)
Package 3 width	5.91 in (15 cm)
Package 3 Length	15.75 in (40 cm)

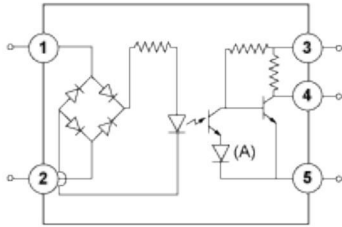
Offer Sustainability

California proposition 65	WARNING: This product can expose you to chemicals including: Nickel compounds and Di-isodecyl phthalate (DIDP) which is known to the State of California to cause Carcinogen and Reproductive harm. For more information go to www.p65warnings.ca.gov
EU RoHS Directive	Pro-active compliance (Product out of EU RoHS legal scope) EU RoHS Declaration
Mercury free	Yes
RoHS exemption information	Yes
China RoHS Regulation	China RoHS declaration
Environmental Disclosure	Product Environmental Profile
Circularity Profile	End of Life Information

Dimensions



Wiring Diagram



- 1,2 : Field VAC
- 3 : Vcc
- 4 : Logic
- 5 : Ground
- (A) LED